

PATHWAYS PRESBYTERIAN CHURCH

Palmerston North¹

Parish Profile



Our Mission

*We strive to be a community of faith,
loved by God, worshipping together
and to share our love in the world.*

With Christ: Being/Growing/Living/Sharing

¹ The name Presbyterian New Church was a temporary name adopted in July 2018 following the amalgamation of two existing parishes. The new name PATHWAYS was chosen by the congregation on 10 April, 2022.

Welcome to our Parish Profile

In this document we set out a description of our church, our parish and our mission. We hope this will form a good basis for helping you to discern if we are the right church for you to lead.

Introduction

Who are we? We are a Presbyterian church based in Palmerston North currently on three sites, made up of around 50 regular Sunday worshippers with more joining us online. We are a very sociable, welcoming church, inclusive to all and embracing diversity.

Finding and walking our individual pathways to and with God is a uniting factor in this diverse congregation. Together we are seeking the Kingdom of God as we follow in Jesus' footsteps; caring and sharing our love and resources within our own and the wider community. Speaking out on social justice and environmental issues are an important focus in our ministry.

What are our greatest challenges? We are a smaller but committed and capable congregation that needs to corporately and individually step out further in faith and commit wholeheartedly to our vision *of Sharing God's love, within and without*. We need encouragement, teaching and practical guidance and leadership to achieve this.

Where have we come from? We are a recent fusion of two churches joining together in Mission. We are slowly strengthening our sacramental traditions, while continuing to develop our evangelical outreach, structure and processes.

What point have we reached? Over the years we have enjoyed strong Bible based teaching and preaching from our clergy and elders. We continue to develop an organisational structure as the basis for prioritising and fulfilling our Vision and Mission statements. Some growth has been achieved and we continue to attract occasional newcomers.

Where do we need to go from here? We are keen and expect to see further growth but are frustrated not to have achieved more. We want to see a growth in personal discipleship and in Mission with our community. We want to achieve this while maintaining our own strong sense of community which we value so highly.

What do we need from our new minister? We are looking for a minister who will build on what we have already achieved, help us meet these challenges and move to the next phase of our journey. He or she needs to be a person of strong personal faith and leadership skills. But it is essential for the appointee to be a collaborative team player who is able to nurture, motivate and affirm the talents and contributions of others. It is also critical that he or she has a real gift for preaching and teaching and is able to relate the Bible intelligently to contemporary life.

Church Background

Pathways Presbyterian Church (PPC) is a venture that arose from the decision of two Palmerston North Presbyterian Churches with a history of 140 years of service, to form a new Church. These congregations were: the twinned parish of St Marks and St Andrews, and the parish of St Davids. The catalyst for the formation of PPC was the requirement for these Churches to vacate their worship spaces because they did not meet the requirements set by PCANZ regarding earthquake strengthening.

The church buildings are located as follows:

- St Andrews in the City was built in 1958 on Church Street adjacent to the Square at the centre of Palmerston North; it stands on the site of the original first Presbyterian Church in Palmerston North built in 1878.
- St David's Presbyterian Church, which was founded in 1913 in the suburb of Terrace End, is situated on the corner of Main and Rainforth Streets;



- St Mark's Presbyterian Church, was founded in 1958 initially on the corner of Thomson Street and College Street, before moving to its present location of 117 College Street, in the suburb of Awapuni.

The congregation of PPC presently hold worship services at the Lychway Funeral Home, 5 Roy Street, Palmerston North.

St Davids moved their services to the Lychway in November 2016; St Marks and St Andrews respectively held concluding services at their churches on Palm Sunday and Easter Sunday 2017, after which they joined St Davids worshipping at the Lychway. The first joint service of the two congregations was held on 30 April 2017. Subsequent to departing their worship spaces, the St David's Community Centre and St Mark's Church (but not the adjoining church hall) have been strengthened and remain in use, with the main Church office being temporarily located at on the St Mark's site in Awapuni.

Earthquake strengthening, some roof replacement and internal refurbishment are currently being undertaken at St Andrew's. These alterations will greatly enhance our mission capability throughout the city and while different outreach activities operate at each site, St Andrews will be our worship centre once re-opened and has an excellent pipe organ and grand piano.

Although the service of 30 April 2017 was the first occasion parishioners of St Andrews and St Marks had worshipped together with St Davids, they quickly found their respective theologies, styles of

worship and sense of mission to be highly compatible. This in part reflected longstanding connections between the respective congregations, with many members having been part of one or more of the churches at varying times and many having had contact with each other through organisations such as Presbytery, the Association of Presbyterian Women, General Assembly and wider friendship networks.

Our three sites are presently named PATHWAYS PRESBYTERIAN at St Andrew's, PATHWAYS PRESBYTERIAN at St David's, and PATHWAYS PRESBYTERIAN at St Mark's.



Opportunities and Challenges

Pathways Presbyterian Church provides significant opportunities and challenges for a new minister. There is an opportunity to continue the process of consolidating a newly amalgamated church and leading it into the future. There is a significant amount of goodwill in the new church and the leadership and laity are working well together. A new minister will be able to call upon a solid core of experienced and wise parishioners who have a wide range of personal, professional and practical skills as relates to church governance.

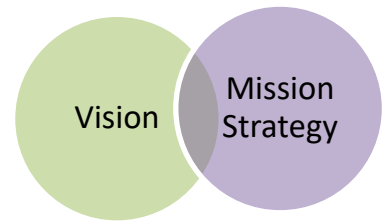
The church is in a sound financial position albeit heavily reliant on investment income. Nevertheless, PPC is clearly in a position where it can sustain full-time ministry and administrative and support services. It also has an active outreach programme, particularly in Children and Family Ministry and a long tradition of community-embracing ministry. With both city and suburban sites there is unique potential to provide diverse forms of mission and worship. Our congregation is blessed with excellent musicians, with a choir, ukulele orchestra, organist and various other musicians participating in worship at different times. PPC attracts people from all walks of life and cultures and accommodates all shades of faith among parishioners.

Worship services will move from the Lychway Funeral Directors site to the Pathways Worship Centre at St Andrews as soon as the contractors have completed the work. This is expected to have been completed around July 2022.

As with many churches nationally, there are serious challenges facing PPC, principally declining attendance at worship and the need to rationalise our resources at three separate sites. Despite these challenges the congregation is resilient and look forward to the appointment of a minister to lead this new phase in the life of our church.

Vision and Mission Strategy

While we have had a Mission Plan since our amalgamation, in this last year the people of this parish have been engaging in discussions to better capture and clarify our Vision and Mission statements. As part of that process, the Korean Congregation have also produced their plan for extending our mission in the community.



WHAT IS GOD CALLING US TO BE

VISION STATEMENT:
To demonstrate God's love within and without

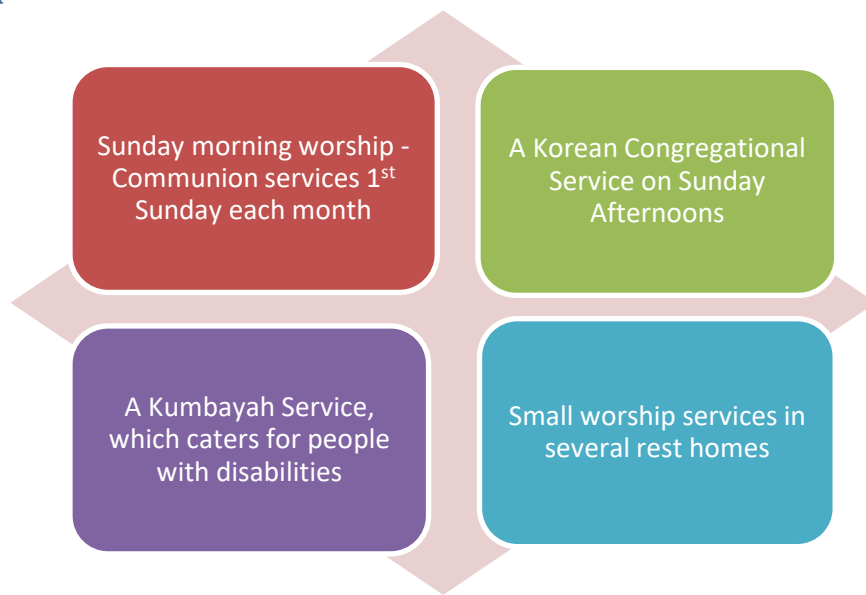
MISSION STATEMENT:
We strive to be a community of faith, loved by God, worshipping together and sharing our love in the world.

With Christ: Being/Growing/Living/Sharing

GOALS for the first five years of a new parish

1. To embrace our new identity and new name to enhance our cohesiveness and belonging:
 - a. To enable spiritual growth.
 - b. To offer vibrant inclusive worship through traditional and contemporary forms.
3. To develop our mission which embodies the Gospel beyond the bounds of the parish, is relevant to the wider community and is appropriate to available resources. This includes the supported development and implementation of our Korean Church mission plans.
4. To strengthen a network of mutual care with special regard for young families and our seniors.
5. To research, develop and implement a plan for our buildings according to the needs of our mission.
6. To manage our structures and systems effectively and efficiently e.g. Parish Council, finance and being a good employer.

Worship



The Reverend Don Hall, is our Interim Moderator. We are also fortunate to have in our congregation a number of retired ministers who lead worship, mentor new ministers and engage in pastoral care. The Reverend John Lee is Minister of the Korean Congregation founded in 2000 as part of our parish. While they join our Sunday services on occasion, every Sunday afternoon Rev. John Lee leads a Korean-language worship service, supplemented with study and prayer throughout the week.

The parish has a website which provides information on our parish and activities, but also serves as an online link to worship services for those unable to attend in person. Recent services remain accessible on this site while daily *Devotions* are also held live each evening Monday to Friday at 8pm.

Since the first Covid-19 outbreak, we have been able to livestream our services every Sunday over the last 3 years, and those unable to attend have utilised this way of sustaining their faith.

Our Sunday morning services tend towards the traditional style of worship, using the lectionary and drawing primarily on the Church Hymn Book, with modern songs and elements increasingly incorporated into worship. The inclusion of children's contributions in worship is focused on enhancing their sense of being a loved member of the congregation. The opportunity to sing in a choir and the opportunity to hear a choir is very special for many parishioners. To better recognise and include children in worship, a team of volunteers liaise with the worship leader in planning children's activities during the service.

The congregation has been blessed with a wide variety of worship leaders during the vacancy and are very accepting of different styles of leadership. In addition to ordained Ministers, there are several lay preachers in the congregation and various teams who have assisted with worship on occasion.

Mission

Prior to the closure of two of our worship centres, PPC had enjoyed a long tradition of mission and engagement among local communities. This continues at our St David's and St Mark's sites and will be re-established at St Andrew's when this church is re-opened in mid-2022. Our current activities embrace many in our local and far wider communities (see below), but we continue to seek other avenues of mission where needs are identified.

Missional Activities

- **KC News** – This is a monthly parish Newsletter which is widely circulated in hard copy or by email to current and previous members and associates of the parish. Available upon request.
- **Children's Groups** – These are held at *The Lighthouse* children's area and hall at PNC Roslyn. A Monday morning playgroup 'Small Miracles' and 'Little Groovers' which is run on Thursdays during term times, are supported through parish and Ministry of Education funding and run by two part-time employees. An after-school programme for families is also held on Wednesdays.
- **Friends** is a group of seniors, averaging around 30 attendees most of whom are parishioners, who meet on the fourth Thursday of each month at PPC at St David's at 2.00pm. *Friends* typically includes a speaker and singing, and communion is held quarterly.
- **Meeting Point** - A weekly group founded over 30 years ago, shortly after the benefit cuts instituted in 1991. Activities over the years have included Budget Cooking Classes, Budget Sewing classes, art and other crafts. It has a wide constituency averaging 35+ each week including new migrants. Knitted articles are given to needy families through relevant organisations.
- **Music Ministry** - A series of concerts are organised every year which bring a variety of Christian, Classical and Contemporary Music to local audiences. There are also a variety of other instrumentalists who meet regularly for free lessons together and who on occasion also participate in providing music in worship, plus a Ukelele Orchestra. In addition:
 - at Christmas the parish hosts Carols in the Park at Memorial Park, which is opposite the Church on Main Street;
 - the parish choir also sing carols at a number of rest homes at Christmas and on other special occasions as warranted;
 - a Robert Matthews Music Scholarship is awarded annually by the parish to an up-and-coming musician in the community.
- **Kumbayah Ministry** – Led by Rev. Anne Bennett and supported by parishioners, this group of around 40 includes ex-Kimberley residents and met monthly for worship and singing until the Covid outbreak - they have since been more isolated for their safety. Anne continues to visit them regularly in their care homes and has provided resources for staff to utilise with residents meantime.
- **Pastoral Care Team** - Currently a Coordinator and active team provides pastoral care on a regular and reactive basis through visiting, providing meals (Food with Love) and support during crises for example. During Covid lockdowns, a grocery collection and delivery service operated.

- **Quilting Group** - Quilts are regularly made by a number of active and skilful quilters, both as memorials for particular celebrations and as prayer quilts for parishioners suffering serious illness or other struggles or who may be leaving the parish. Each prayer quilt is blessed during a worship service and parishioners have the opportunity to add their own prayers.
- **Kiwiway** – a small group that welcomes immigrants into the city and supports them as they learn about living in New Zealand as God’s love is shared.
- **Study groups** – A number of small study groups regularly meet together for discussion and prayer.
- **The Longburn Trust** is a fund provided to support the training and education of parishioners and staff in ways that will benefit the parish and our missional activities.

These activities are also supplemented through:

- **Public Lectures/Events** - PPC has hosted many public lectures or events which aim to provide an informed, critical perspective on social issues. These are varied and have included a Winter Lecture series, a 4-part series on Science and Faith, plus a doctoral studies art exhibition around violence against women.
- **Overseas Mission** – A variety of mission projects are supported including World Vision, Fred Hollows Foundation, CWS, plus individual missionaries and local crisis situations e.g. West Coast flooding, Tonga disaster.
- **Presbyterian Women** - PPC has many active members of Presbyterian Women (formerly the Association of Presbyterian Women) who continue to be active in the church and many fundraising and quilting projects.
- **Monthly Organ Recitals** and concerts which are currently being held in other venues until St Andrews re-opens.
- **Weekly food donations** from the congregation

The Parish Council recently supported and will provide resources for a mission proposal from our Korean minister which included among several initiatives, establishing an International Worship service.

Sandpit activity



Kumbayah Worship

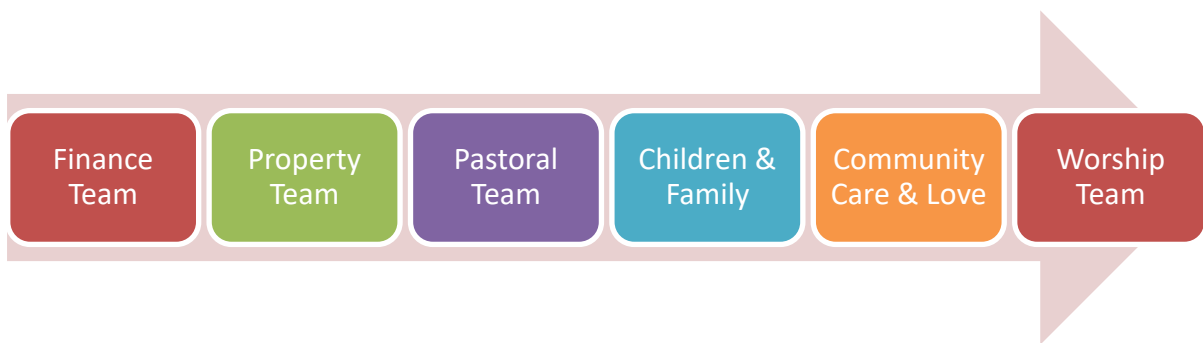


Church Organisation

Pathways Presbyterian Church is governed by a Parish Council convened by our Interim Moderator the Reverend Don Hall. Judy Seccombe is the current Parish Clerk and Parish Council typically meets on the fourth Tuesday of each Month. Parish Council discusses 'big picture' issues facing the Church as well as deliberating on recommendations from Church Committees. Many Parish Councillors are convenors and/or members of church committees.

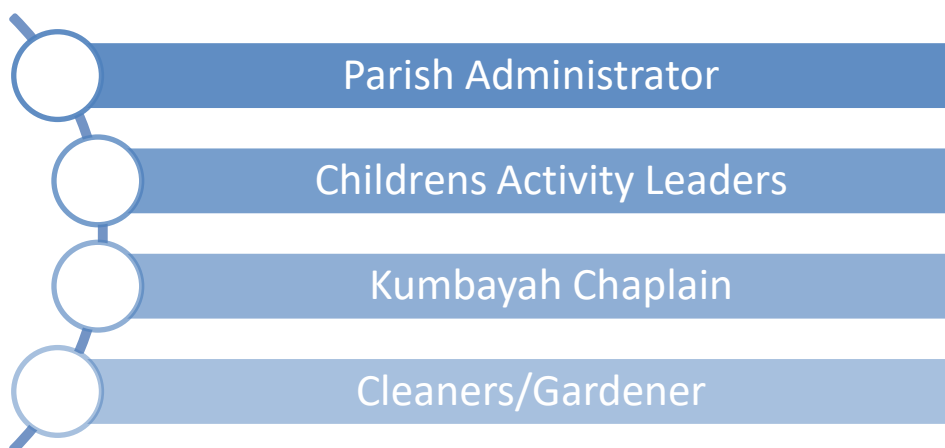
The parish falls within the Presbytery Central area.

Current Committees are:



Employees

We employ people in the following roles:



Some Statistics

Membership:

According to the most recent figures, Pathways Presbyterian Church has 131 members and 32 Associates. Of these members and associates, 60% are persons aged 65+ with a ratio of females to males of 2:1.

Other Contacts:

Currently 141 additional people receive our parish newsletter and/or pastoral care.

Geographic Spread:

The congregation gathers from right across the city with 8.8% of the total roll beyond the city boundary.



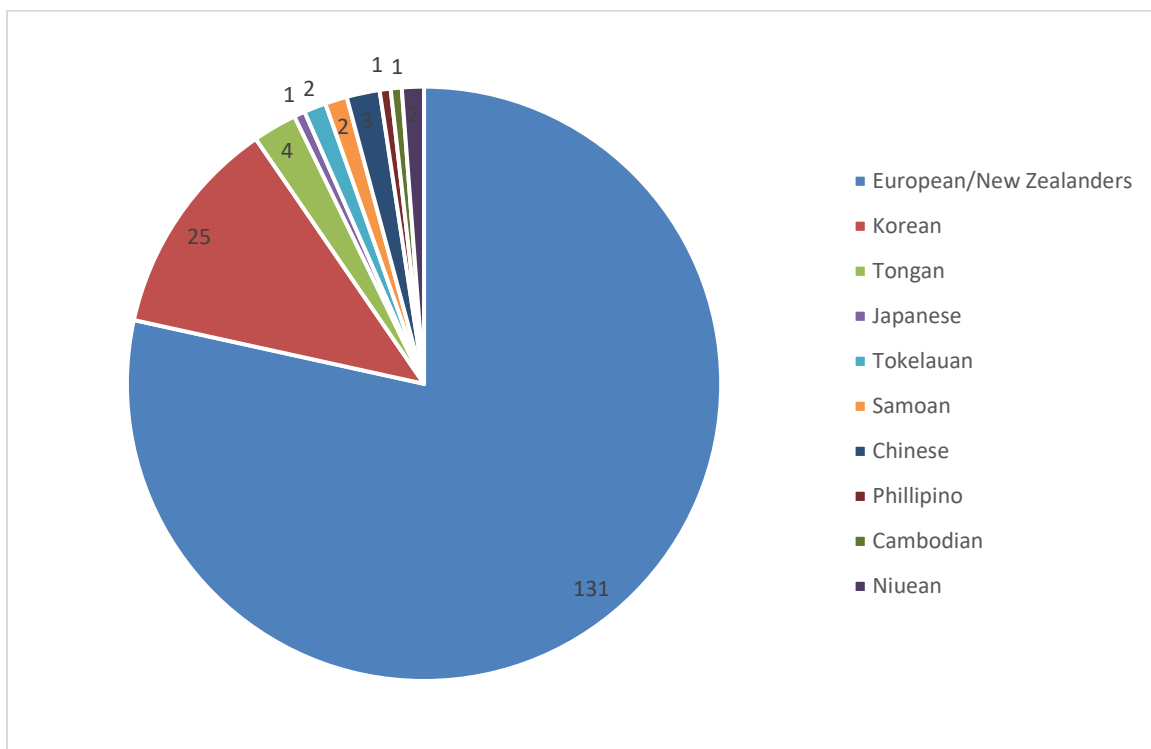
Worship Attendance:

On average, between 45 and 60 typically attend Sunday worship services while up to 20 others presently engage through live-streaming of the service.

Giving:

Direct giving totalled approximately \$115,000 in the previous financial year.

Ethnicities:



Income and Expenditure

With total assets (as at June 2021) of c. \$4.8 million and investments totalling more than \$1.56 million Pathways Presbyterian Church is in a sound financial position. The following information is based on the two annual reviewed accounts for Pathways Presbyterian Church since its inauguration (1 July 2019):

	1 Jul 2020 to 30 Jun 2021	1 Jul 2019 to 30 Jun 2020
Total Income	\$226,830	\$290,235
Offering income	\$111,927	\$96,120
Investment income	\$45,549	\$49,982
Expenditure	\$300,143	\$300,697
Balance (expenditure exceeding income)	\$73,313	\$10,462
Assets		
Bank funds	\$287,469	\$40,730
<i>(Note: These bank funds as at 30 Jun 2020 include a building project grant of \$262,000)</i>		
Investments	\$1,564,915	\$1,630,875
Fixed assets (property, equipment etc)	\$3,246,365	\$3,242,810
TOTAL assets less liabilities	\$4,833,761	\$4,907,074

Currently, as at 31 Jan 2022 (7 months of the financial year), our offering income is about 96% of what had been budgeted. The full year's budgeted offering was estimated to be \$98,835

Grants

In the financial year ended 30 Jun 2021, the following grants had been received:

- Ministry of Education \$2903 for Lighthouse Community programmes
- Palmerston North Community Services Council: \$2186 towards operational costs associated with Meeting Point community activities.
- NZ Lottery Community Grant for Building Project: \$262,000
- NB: In the current financial year a further grant of \$101,836 has been received towards the building project (electricals).

Tararua Windfarm near the city



Position Description

Pathways Presbyterian Church Palmerston North is seeking a full-time nationally ordained minister (NOM) to lead a Christ-centred Community-facing Parish.

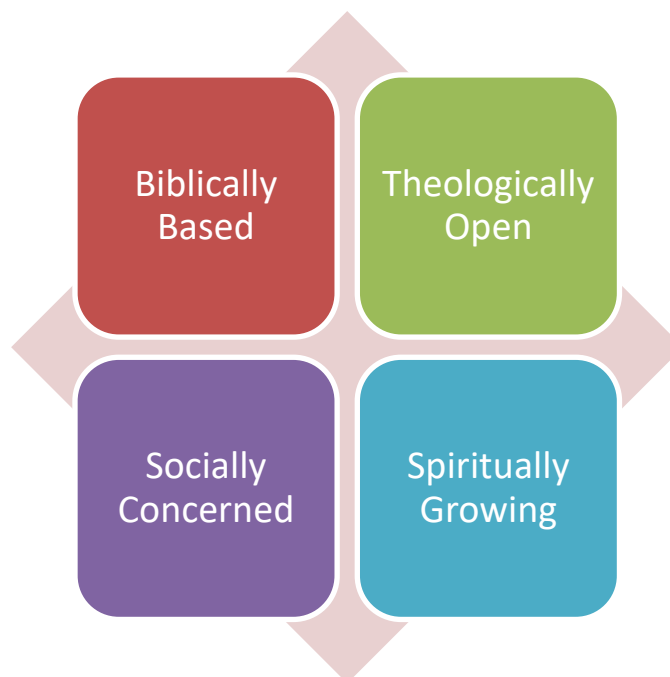
PPC is located in the central city in **Palmerston North**, population 76,029. Palmerston North is a vibrant, multicultural University City with excellent shopping, schools, parks, restaurants, sports facilities and amenities. The Linton Army Camp, Massey University Campus and the International Pacific University are situated on the outskirts of the city with UCOL Polytechnic in the central city. Some significant industrial developments are currently underway in various parts of the city. Employment opportunities abound in both urban and rural areas.

Palmerston North has the advantages of a big city with the benefits of a small town. Parking is cheap and readily available within the city, and few places are more than 15 minutes away by car. Handy to west coast beaches, the Tararua Ranges, Wellington and the Central Plateau, outdoor activities are plentiful and easily accessible.

The desired applicant will:

- Be a nationally ordained minister
- Have a heart for God and all people
- Have a passion for leading worship and sharing the Gospel
- Bring energy, enthusiasm, and inspiration for supporting the congregation to grow
- Have excellent leadership skills, with a particular emphasis on overseeing the continuing evolution of a new Church

They will lead a Church that seeks to be:



If this sounds like you, please contact:

Rev Don Hall
Interim Moderator

- Email: donjanethall@xtra.co.nz
- (06) 323-1177
- 021 676 147



Lighthouse Playgroup



Quilting Group



Working Bee at St Marks



Korean Youth Choir at St Andrews



Parish Retreat



Renovating St Andrews



Choir sharing Christmas carols



Above: Our lovely ladies



PhD Art Exhibition at St Marks

Below: Ukulele Group; Worship at the Lychway



The Square, Central City

